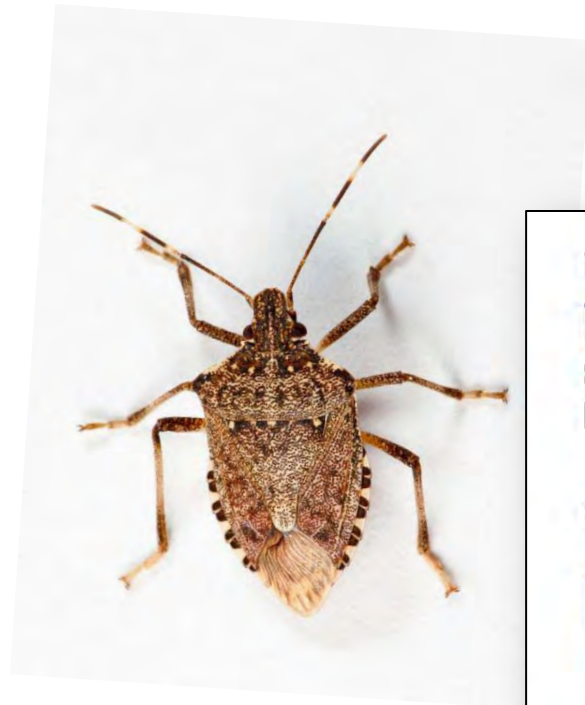


# BMSB and Small Fruit

- Updates from 2012



## Funding



United States  
Department of  
Agriculture

National Institute  
of Food and  
Agriculture

Specialty Crop Research Initiative  
Grant #2011-01413-30937

## Collaborating Institutions



Cornell University



Virginia Tech



Northeastern  
IPM  
Center



NC STATE UNIVERSITY



# Objective 3.1 & 3.2: Crop Specific IPM Programs (Small Fruit)



## Funding



United States  
Department of  
Agriculture

National Institute  
of Food and  
Agriculture

Specialty Crop Research Initiative  
Grant #2011-01413-30937

## Collaborating Institutions



Cornell University



Virginia Tech



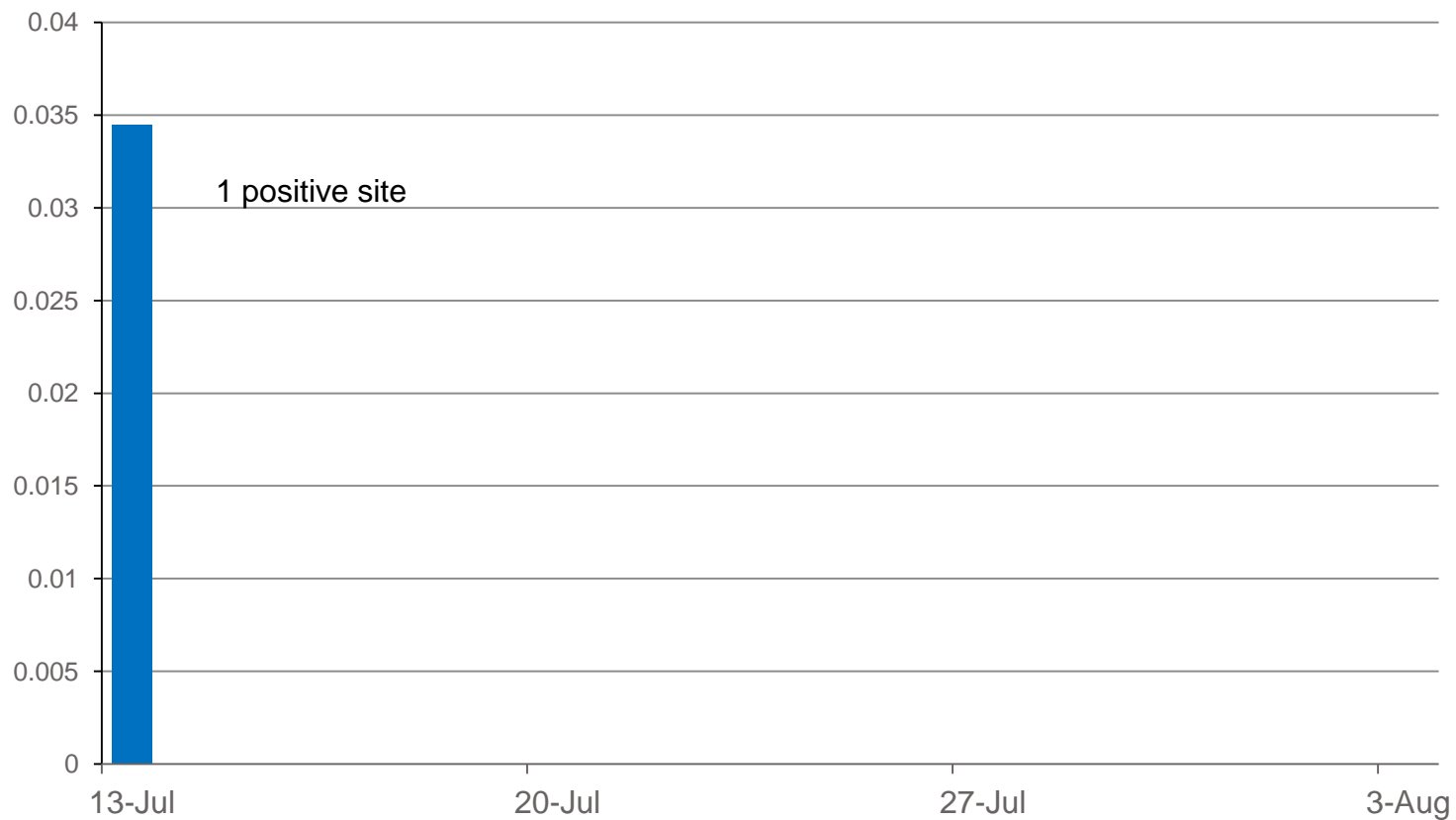
# Spotted Wing Drosophila – A New Threat to Small Fruit Crops



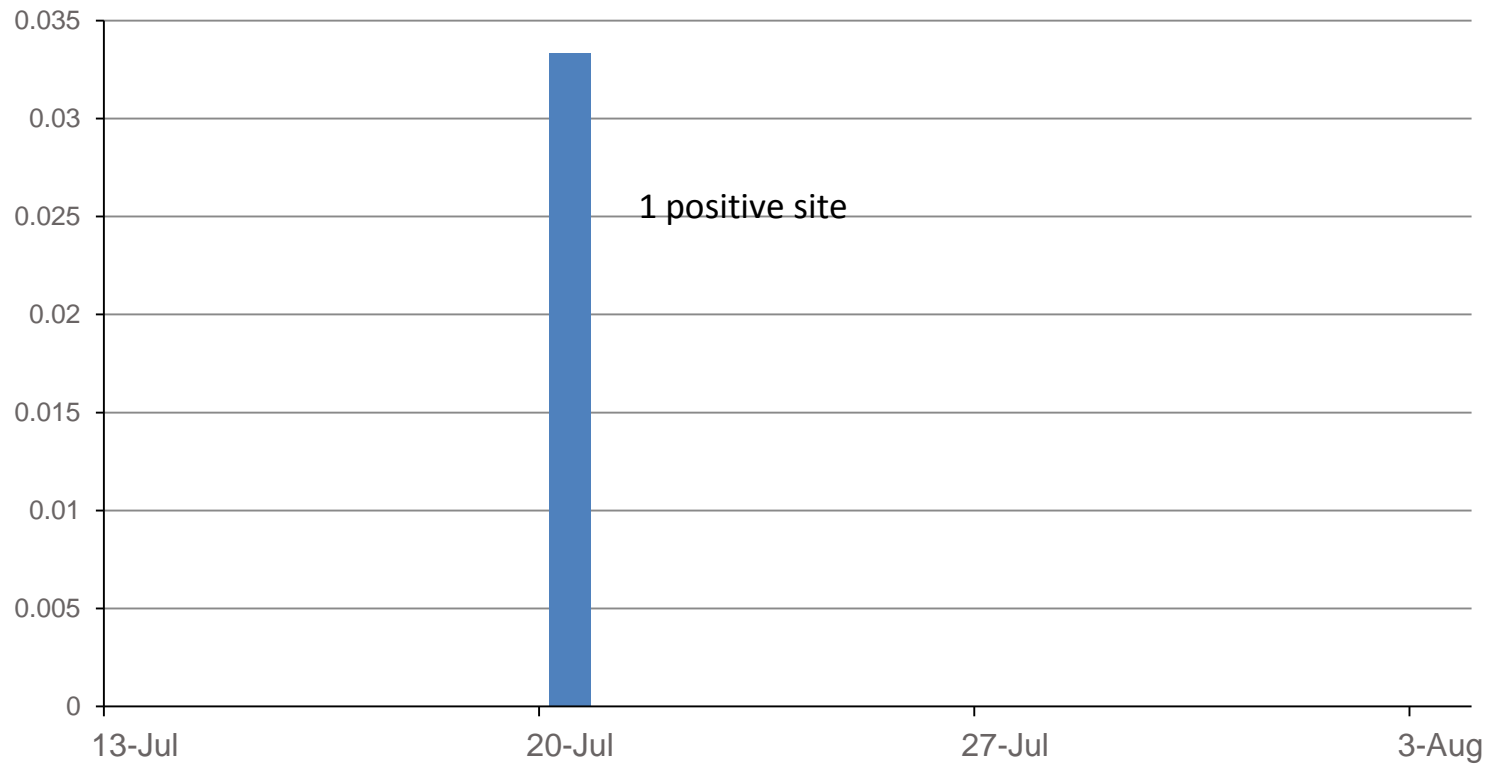
# Spotted Wing Drosophila – A New Threat to Small Fruit Crops

- 2008 – First US detection in California
- 2010 – No reports in the Northeast
- 2011 – First found in the Northeast
- 2012 – Widely spread in Mid-Atlantic and Northeastern states

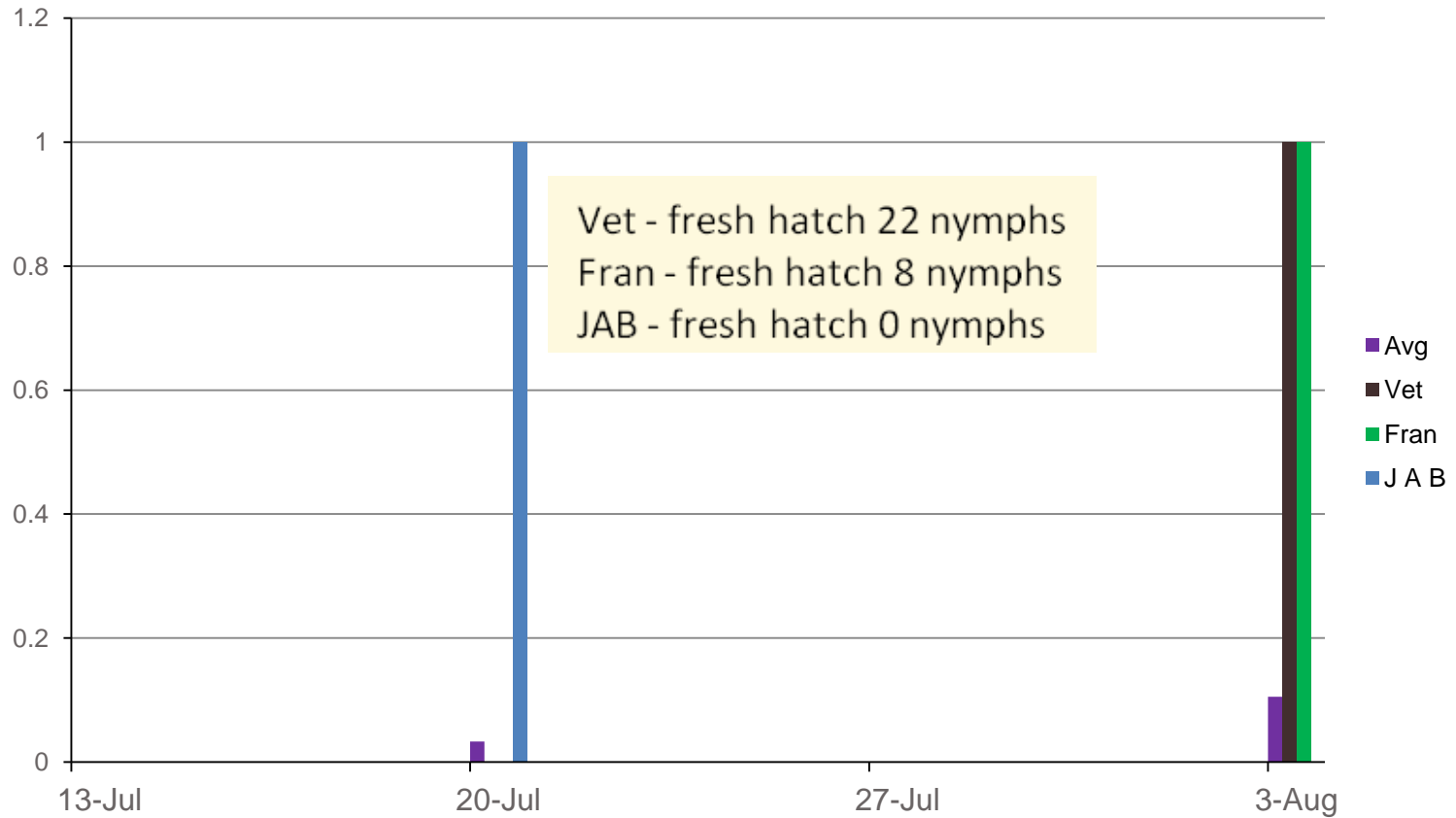
## Adult BMSB/3 Min - 30 sites During Fruit Ripening



## BMSB Nymphs/3 Min - 31 sites During Fruit Ripening



# BMSB Egg Masses/3 Min - 31 sites During Fruit Ripening



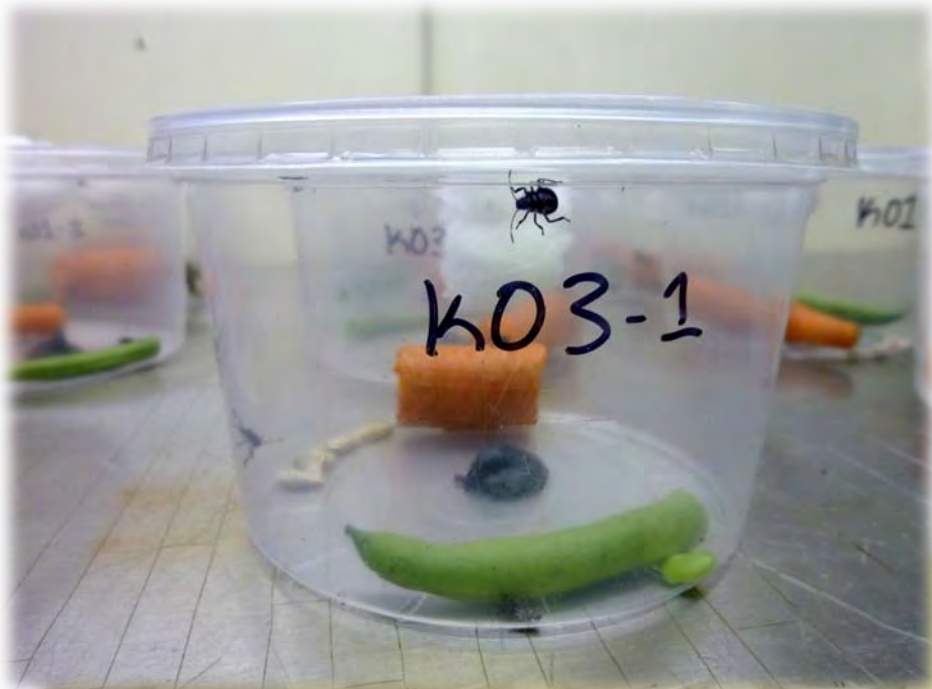
# Management Tools for BMSB

- SPLAT attract and kill bioassays



# SPLAT Bioassays

- Treatments
  - SPLAT for attraction of BMSB (2.5%)
  - SPLAT for attraction of BMSB (5%)
  - SPLAT for A&K of BMSB (2.5%)
  - SPLAT for A&K of BMSB (5%)
  - SPLAT control
- 1 g dollop per arena
- 5 3<sup>rd</sup> or 4<sup>th</sup> instar nymphs
- 4 replications/treatment
- Recorded
  - mortality every 6 and 12 hours for 3 days
- All arenas contained green beans, carrots, sunflower seeds and water



# Results. SPLAT Bioassays

