

Estimating Monitoring Trap Plume Reach and Trapping Area for Nymphal and Adult BMSBs

Tracy C. Leskey

USDA-ARS

Appalachian Fruit Research Station
2217 Wiltshire Road
Kearneysville, WV 25430 USA

Tracy.leskey@usda.gov



Funding

 United States Department of Agriculture National Institute of Food and Agriculture
Specialty Crop Research Initiative

Collaborating Institutions

This material is based upon work that is supported by the National Institute of Food and Agriculture, U.S. Department of Agriculture, Specialty Crop Research Initiative under award number 2016-51181-25409.

Sensitive and Reliable Trap-Based Monitoring System



- Clear sticky panel traps baited with 5:50 mg (Pheromone:MDT) lures from Trece.
- Captured adults and nymphs reliably at low, moderate or high population levels.
- Trap is less expensive and easier to deploy.
- Evaluated across the USA.
- Acebes-Doria et al. (in prep).

Key Question

- Over what area does a single trap reliably sample and capture foraging BMSB adults and nymphs?



Trapping Theory

James R. Miller
Christopher G. Adams
Paul A. Weston
Jeffrey H. Schenker

Trapping of Small
Organisms Moving
Randomly
Principles and
Applications to Pest
Monitoring and
Management



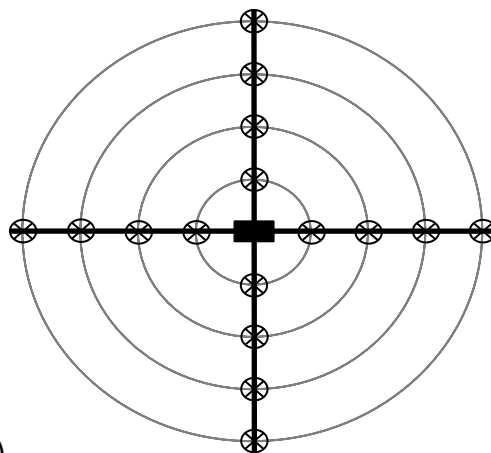
Theory developed using the Weston
Multi-Mover Program

Key variables controlled:

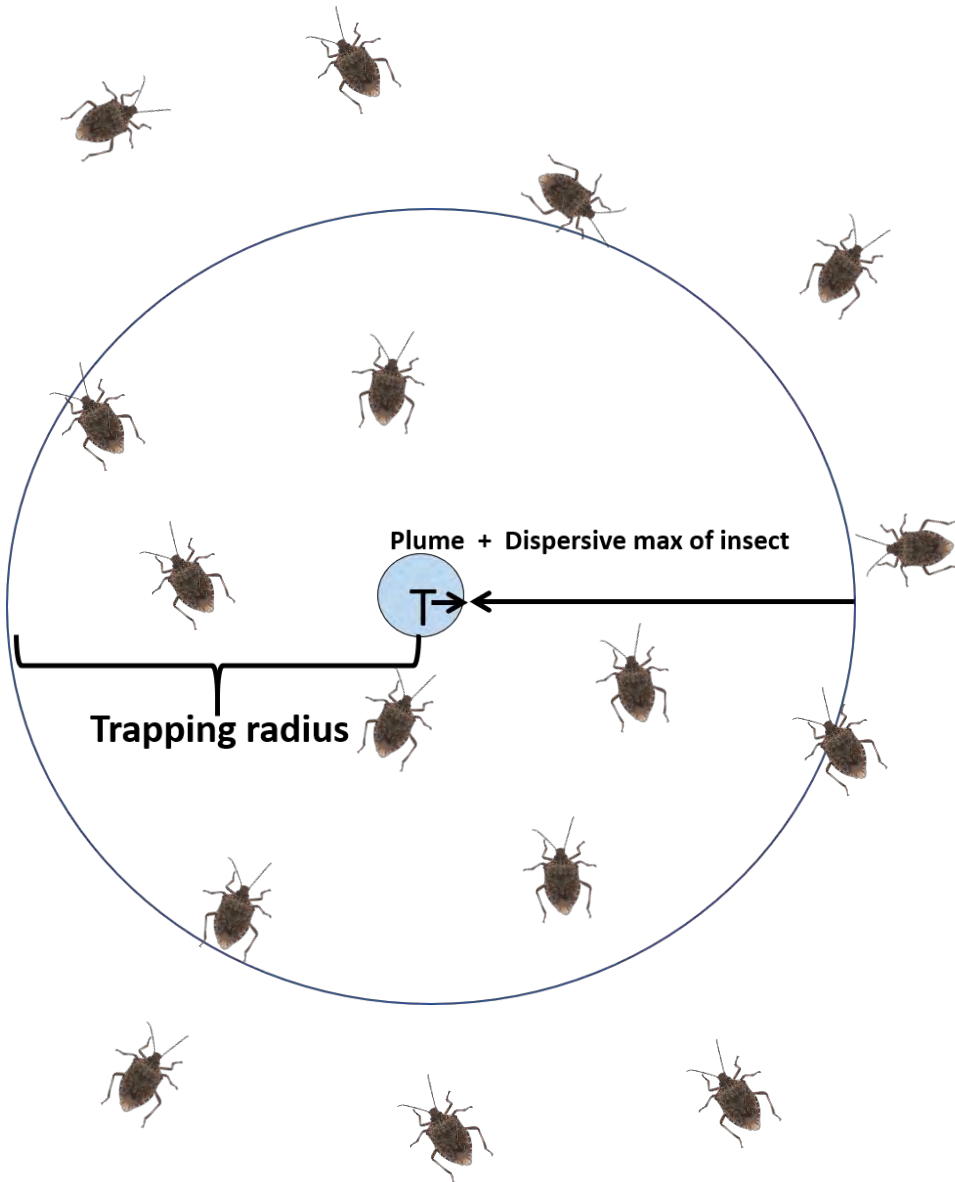
- *Turn angle of random movers*
- *Number of movers*
- *Size of trap and plume*
- *Variable time*



Trapping Theory and Field Validation



Trapping area of a pheromone-baited trap?



Plume reach

Distance from a baited trap that elicits a behavioral response from an insect randomly foraging through the environment.

Maximum Dispersive Distance

Furthest distance from which 95% of the population can reach the trap

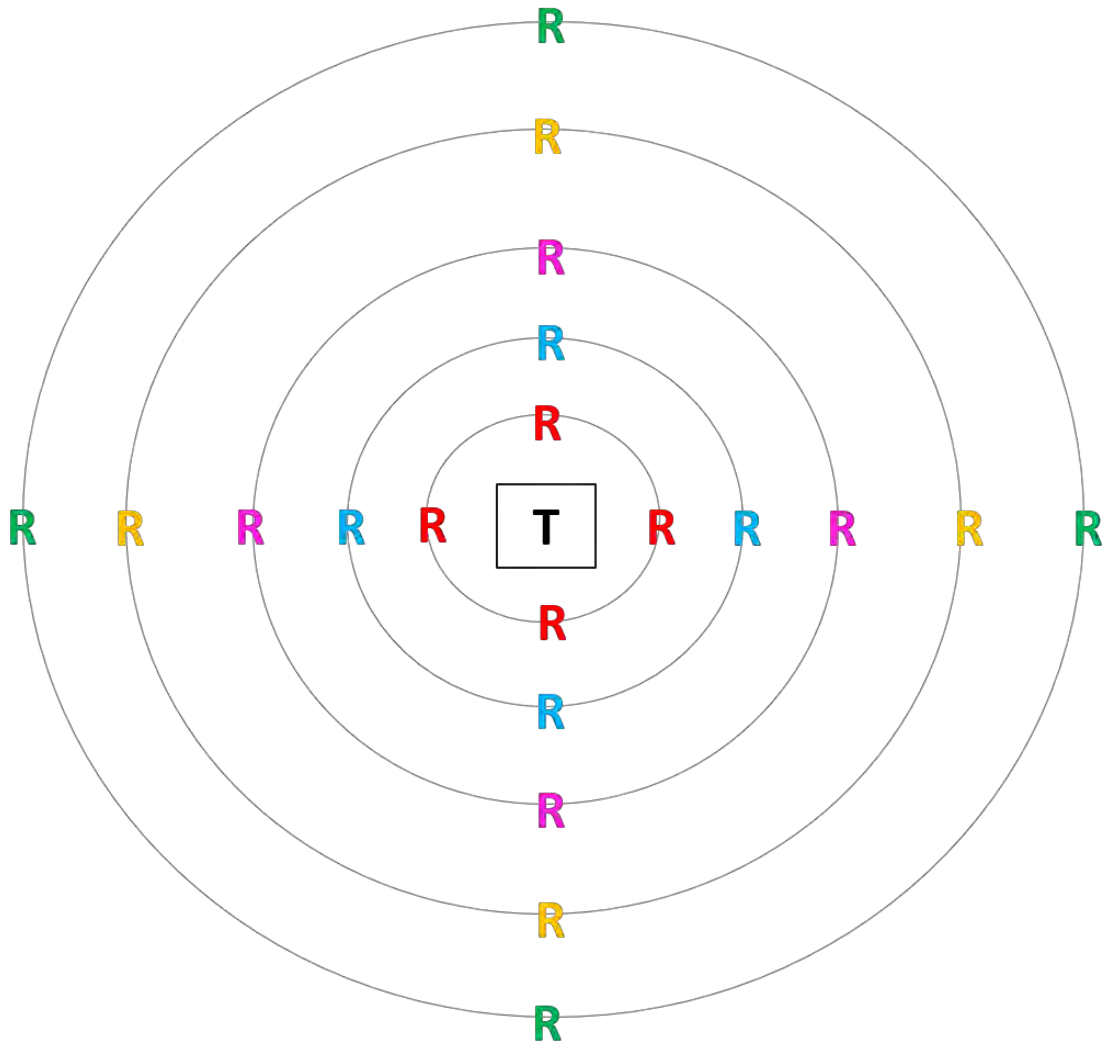
Trapping radius

Longest distance from the trap that can yield captures of target individuals

Trapping area

Circular area around the trap over which a single trap can capture target insects

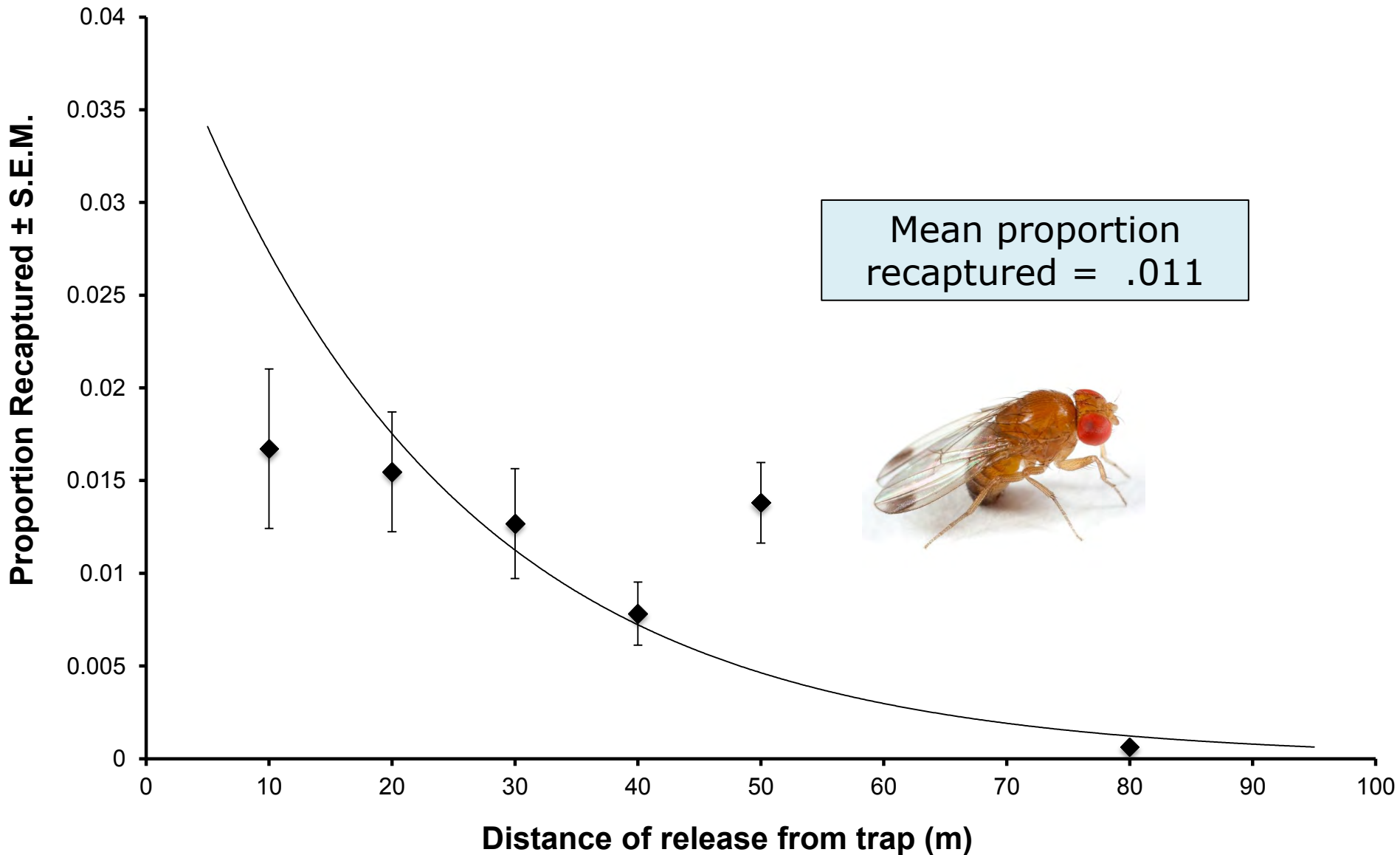
Methodology



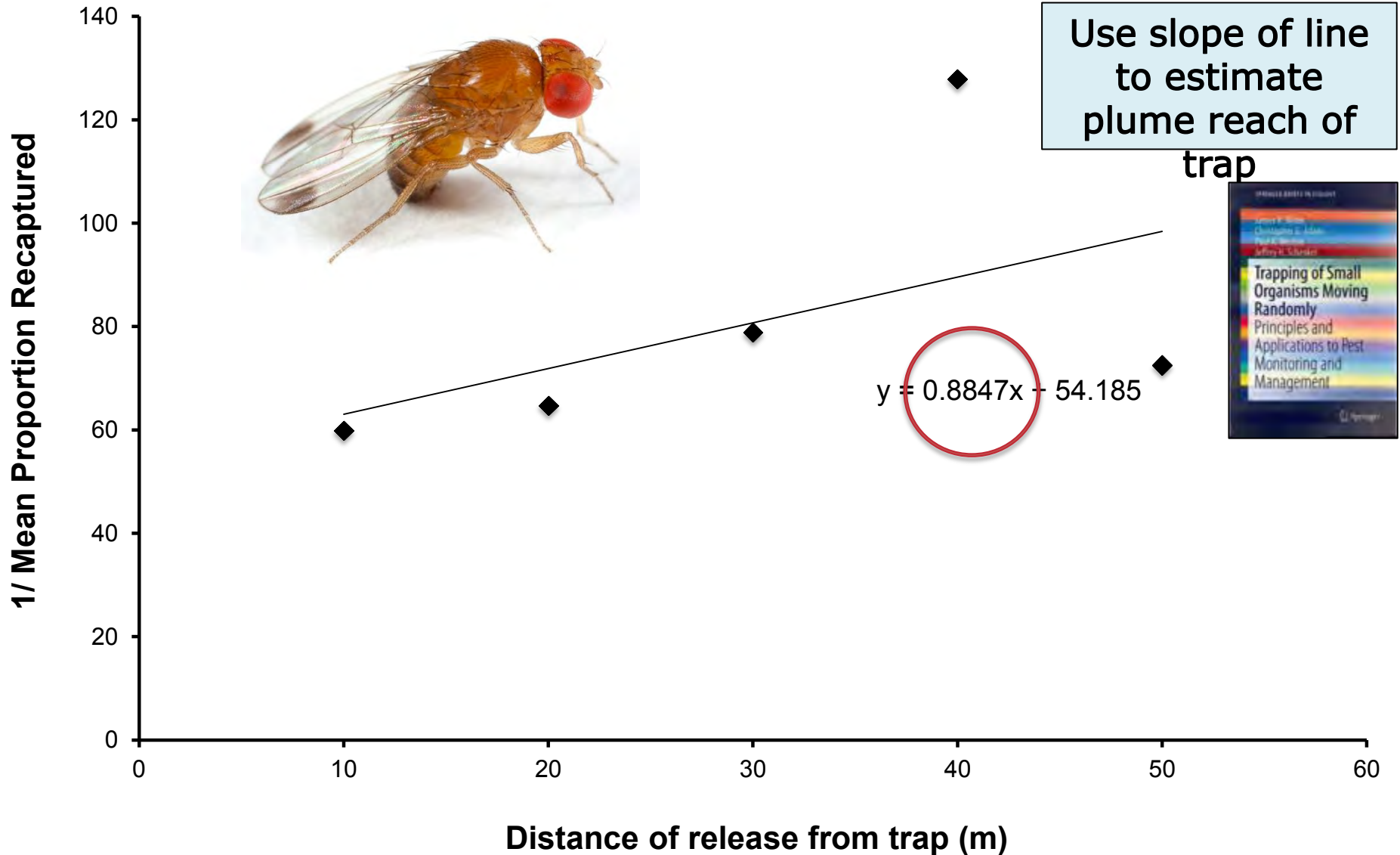
Single trap,
multiple
release
method



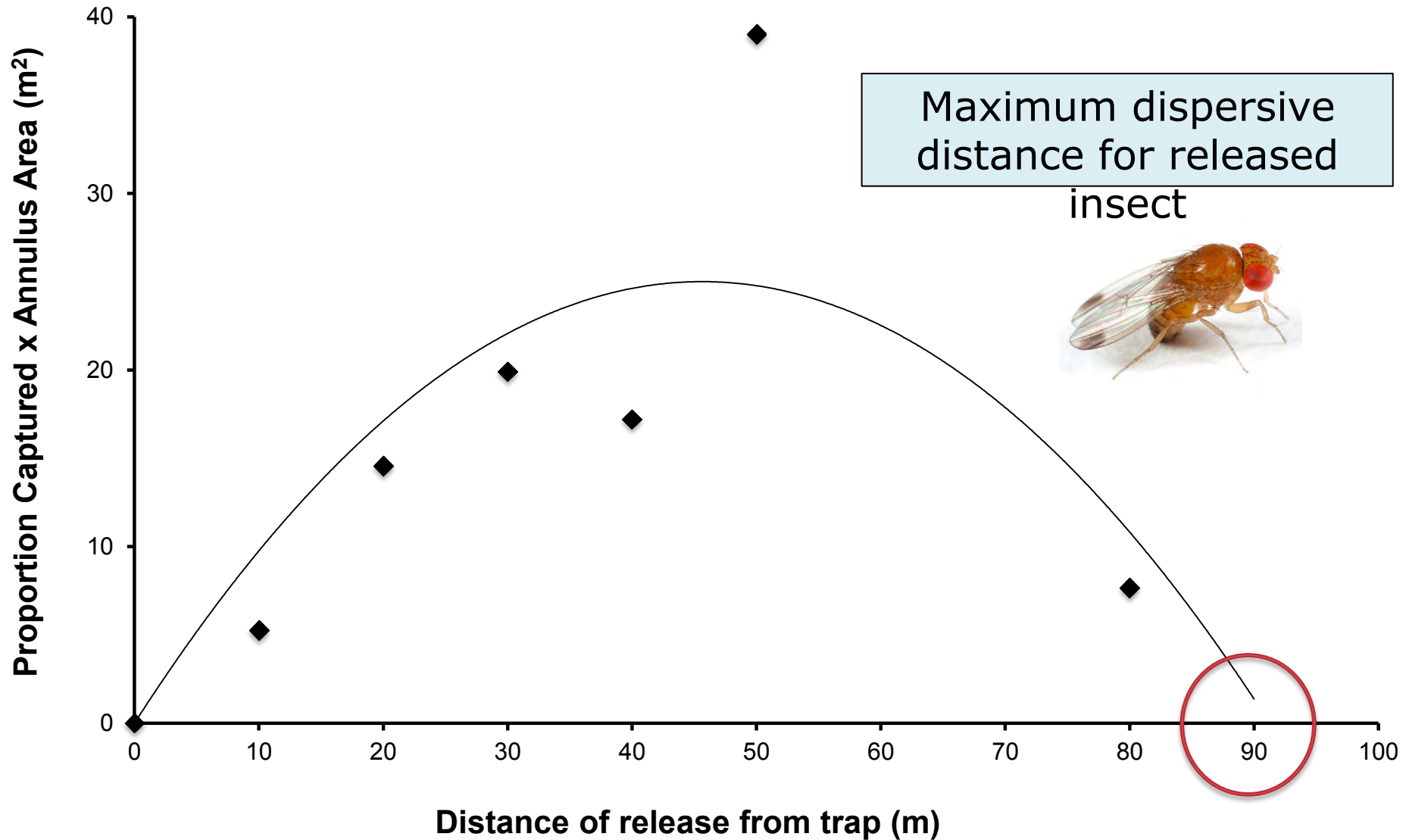
Untransformed plot of trapping data



Transformed data: MAG Plot



Transformed data: Miller Plot



Trapping Area for SWD in Tart Cherry Orchard



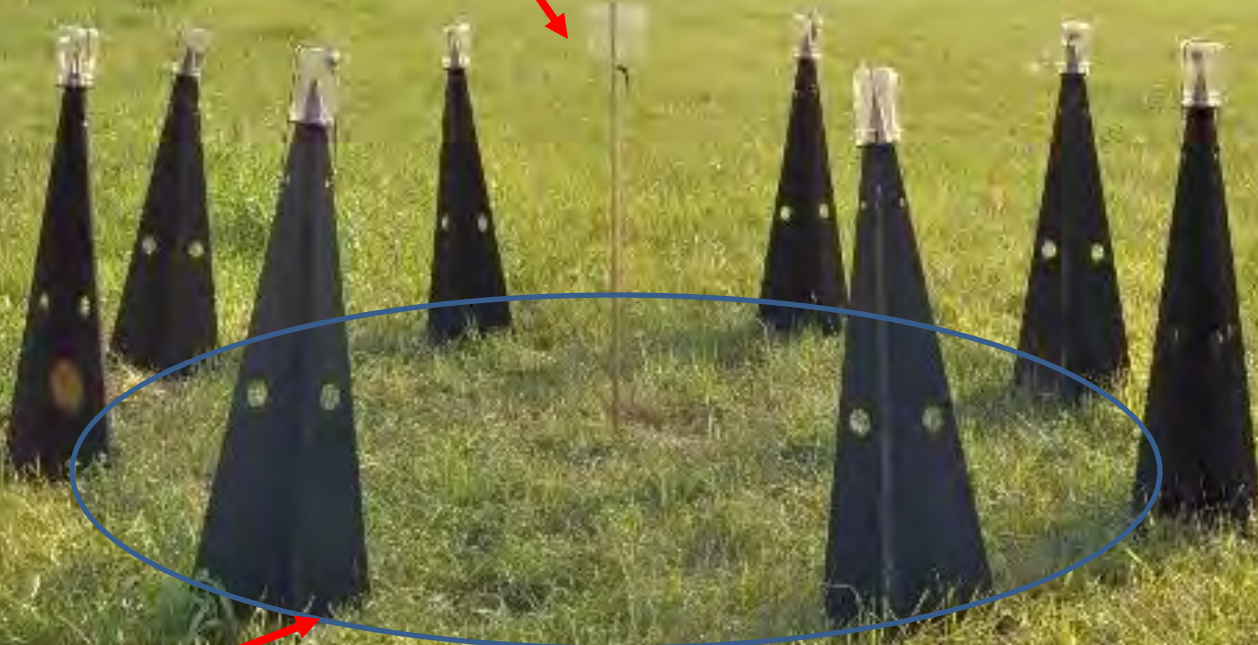
- Recaptured $< 2.0\%$.
- Plume Reach = $< 3\text{m}$.
- Maximum Dispersive Distance = 90 m .
- Trapping Area = 2.7 ha



Methods



Baited Sticky Trap



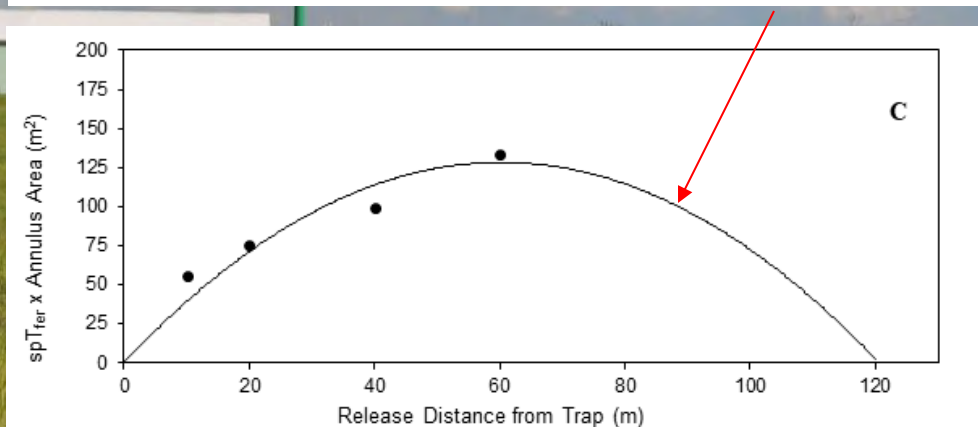
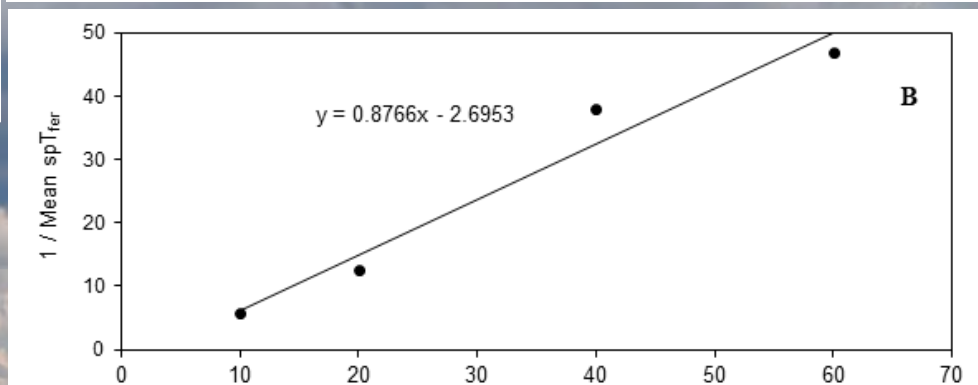
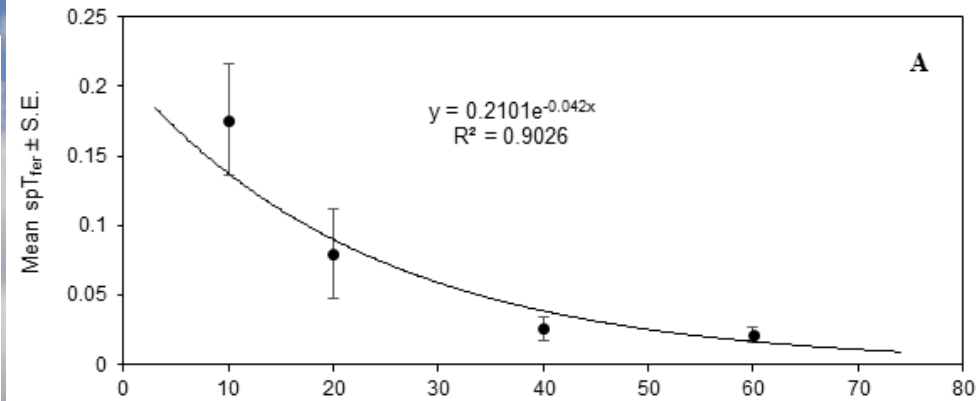
Unbaited Pyramid Traps 2m Away at Border of Area of Arrestment/Aggregation

Morrison et al. 2016

Preliminary Adult Study Results

Adults Mark-Recapture Open Field

- Recaptured 3.2% of marked adults.
- Plume Reach = < 3m.
- Maximum Dispersive Distance = 120 m.
- Trapping Area = 4.83.

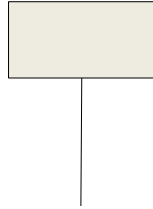


2018 Set-up in Open Field

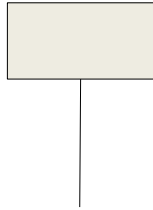


Trapping Area Experiments

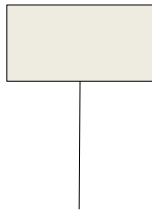
1



2



3



1



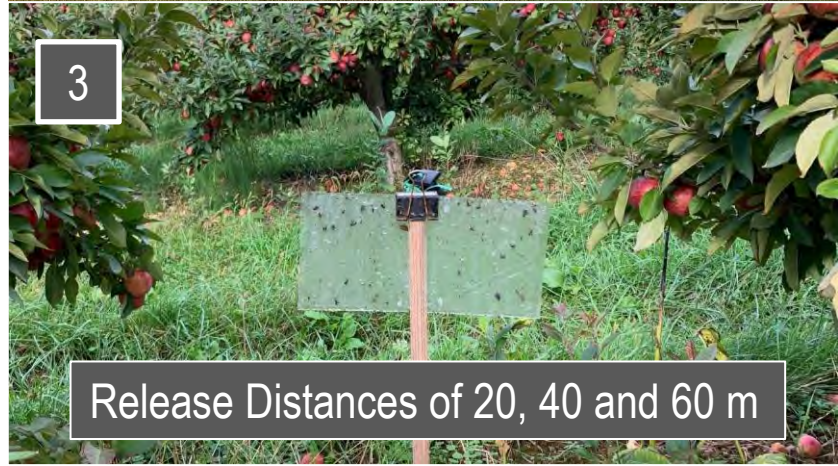
Release Distances of 10, 20 and 30 m

2



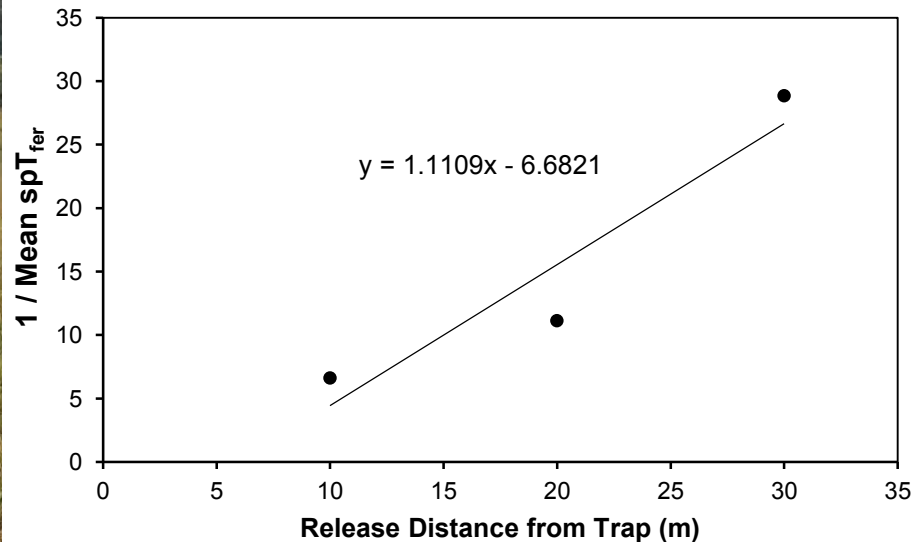
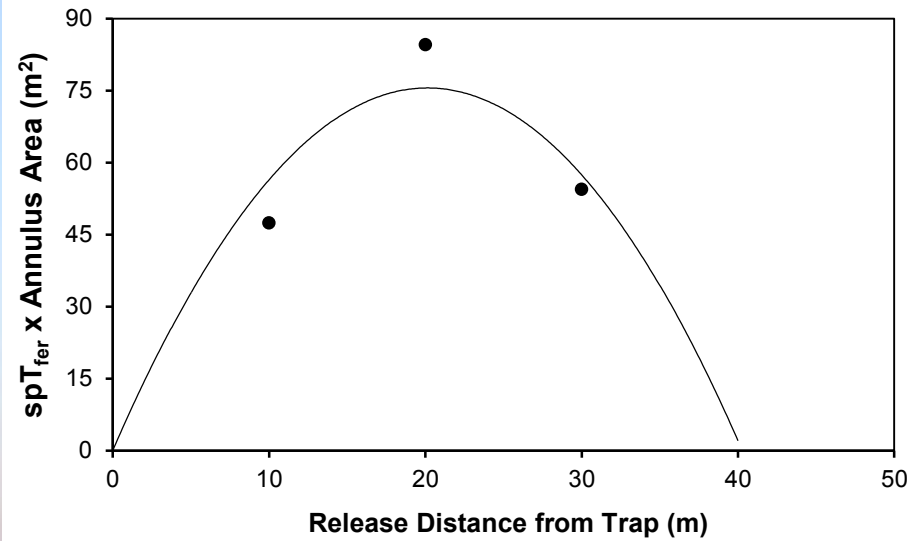
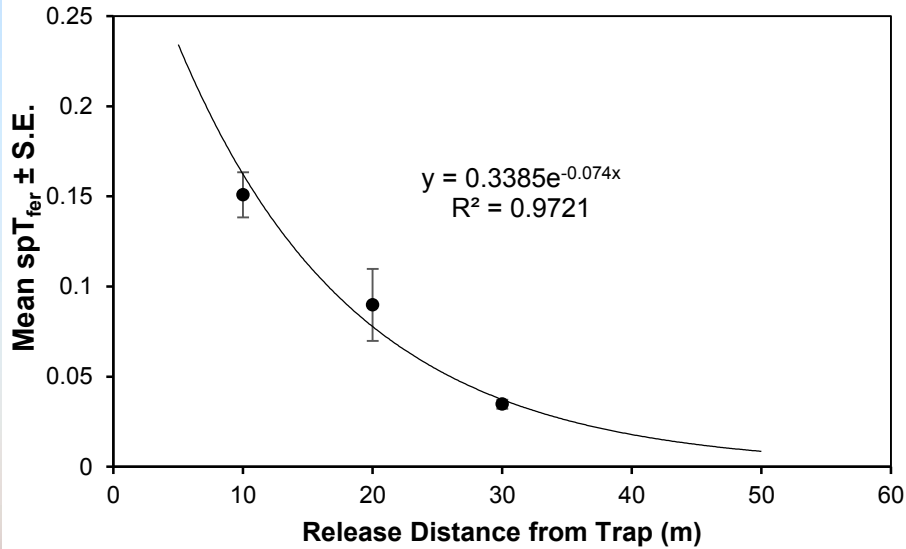
Release Distances of 20, 40, 60 and 100 m

3



Release Distances of 20, 40 and 60 m

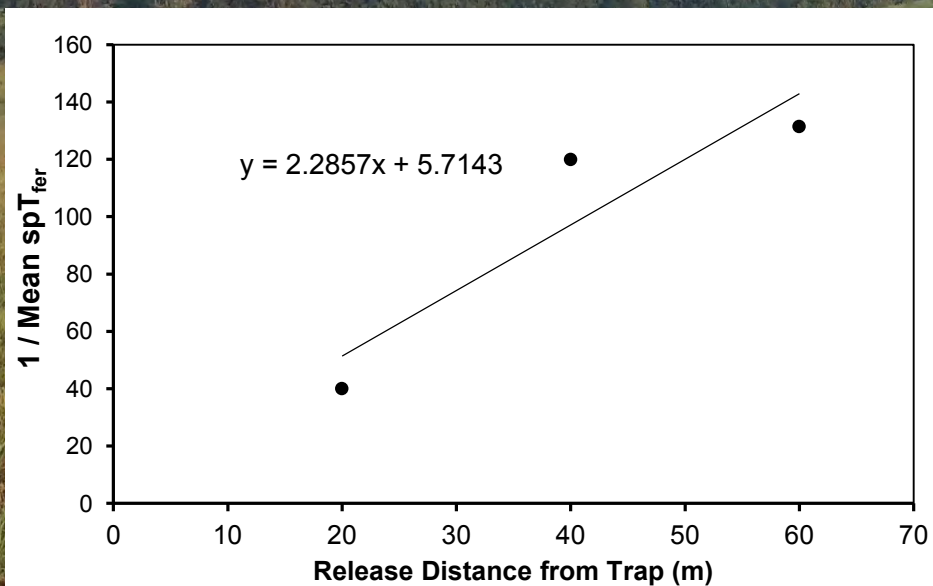
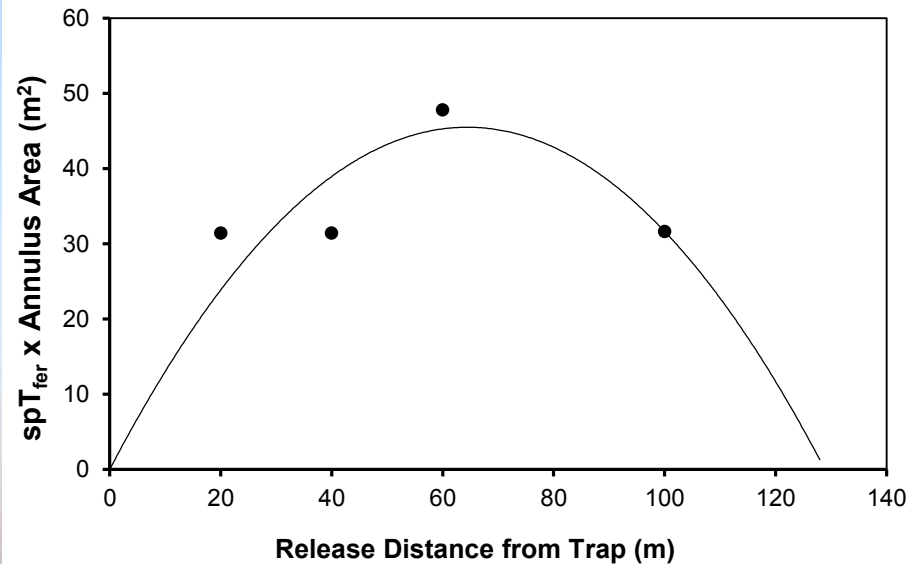
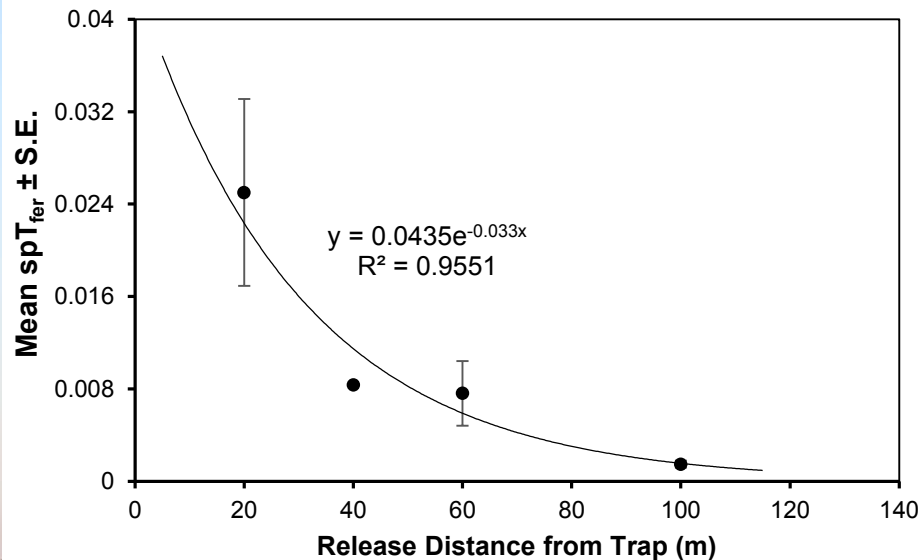
Nymphal Trapping Area Results



Nymphal Mark-Recapture Results

- Recapture 6.6% of released nymphs
- Maximum Dispersive Distance ~40 m
- Plume Reach < 3 m
- Trapping Radius = 43 m
- Trapping Area = 0.64 ha

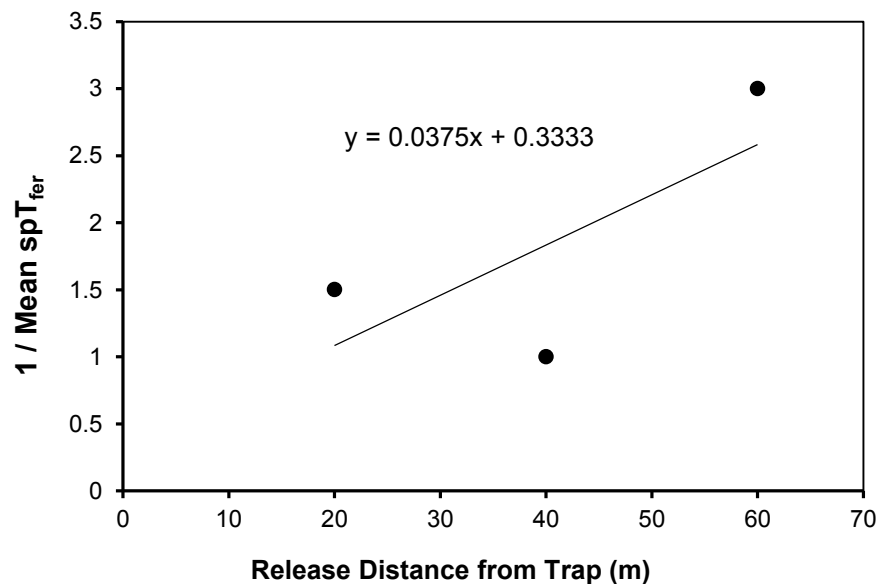
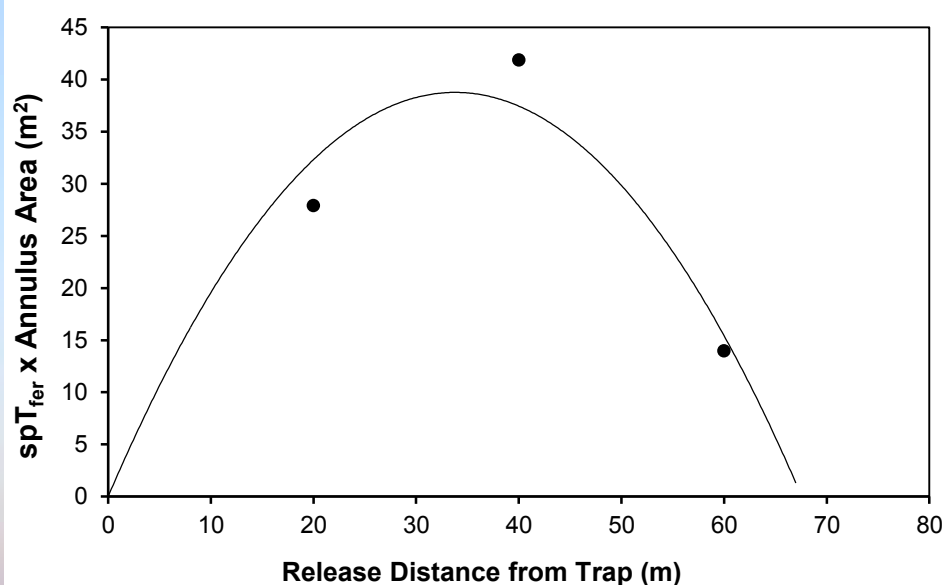
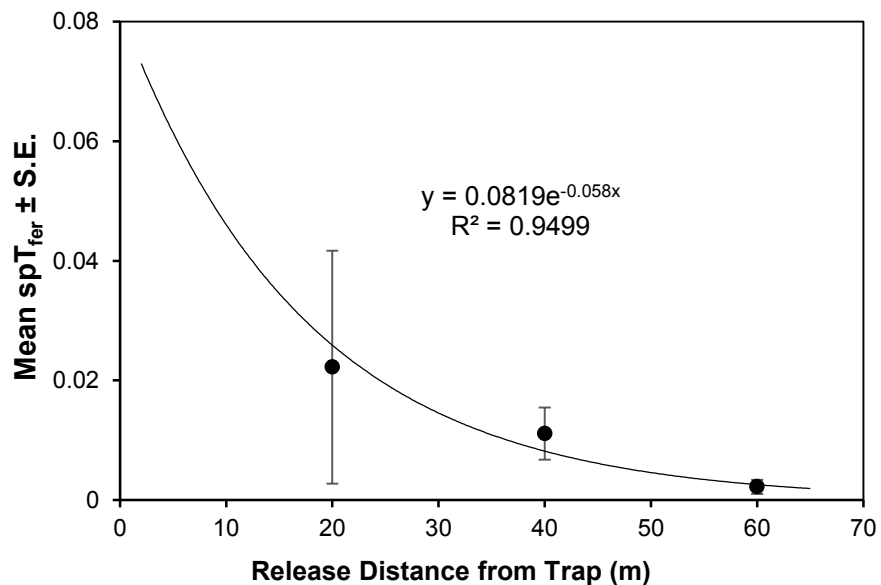
Adult Open Field Trapping Area Results



Adults Mark-Recapture Open Field

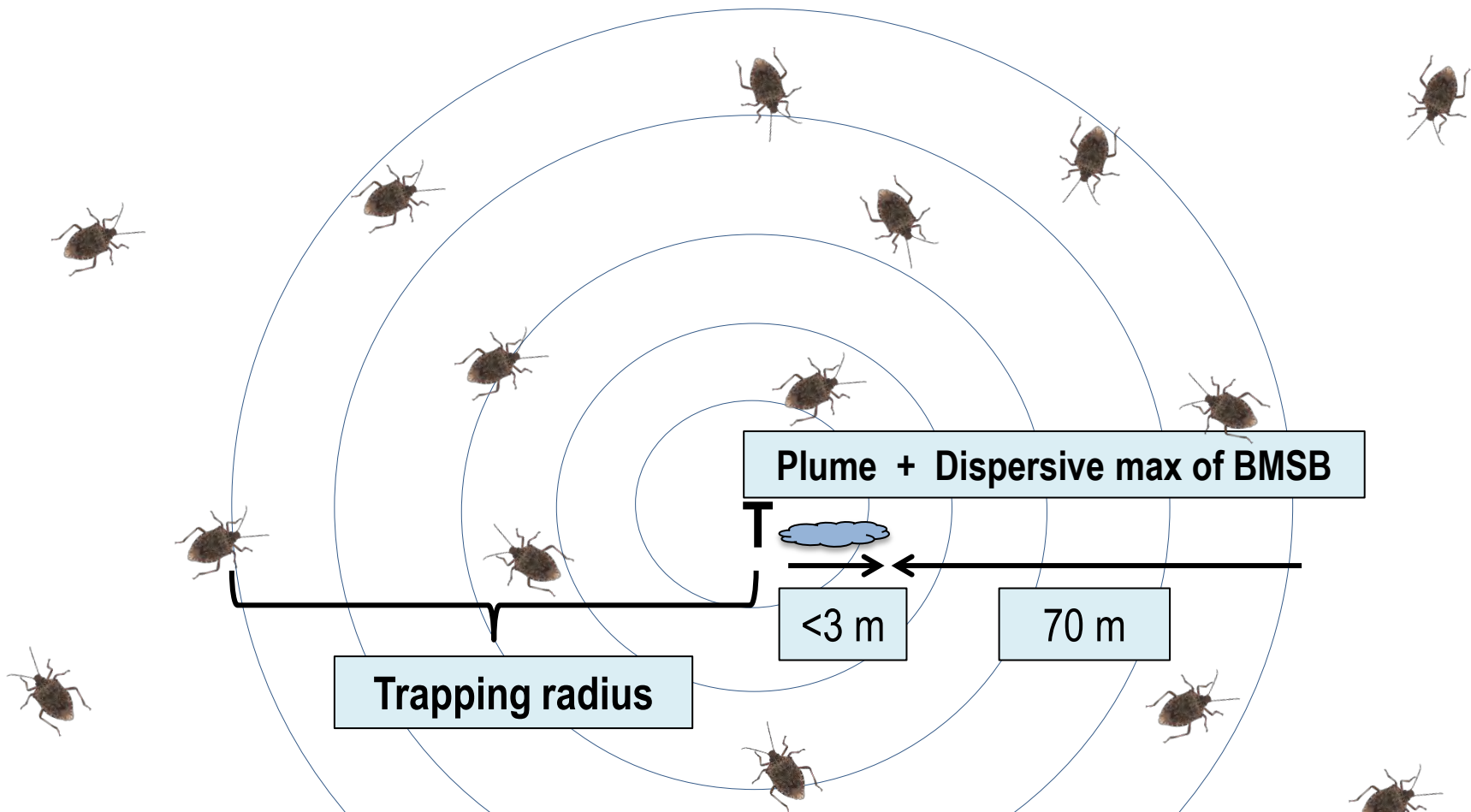
- Recapture 0.6% of released BMSB
- Max Dispersive Distance ~130 m
- Plume Reach < 3 m
- Trapping Radius = 133 m
- Trapping Area = 5.56 ha

Preliminary Adult Apple Block Trapping Area Results



Adults Mark-Recapture Apple Block Edge

- Recapture 1.1% of released BMSB
- Maximum Dispersive Distance ~70 m
- Plume Reach < 3m
- Trapping Radius = 73 m
- Trapping Area = 1.67 ha



Plume + Dispersive max of BMSB

<3 m



70 m

Trapping radius

Trapping radius = 70 m + 3 m = 73 m

Trapping area = 1.67 hectares in an apple orchard

Results For Sticky Panel Trap Baited with Trece Monitoring Lure

Life Stage	Experiment	Percent Recaptured	Plume Reach	Maximum Dispersal Distance	Trapping Area
Adults 	Open Field With Pyramid Traps	3.2%	< 3 m	120 m	4.83 ha
	Open Field	0.6%	< 3 m	130 m	5.56 ha
	Apple Orchard	1.1%	< 3 m	70 m	1.67 ha
Nymphs 	Open Field	6.6%	< 3 m	40 m	0.64 ha

- Estimated plume reach is short for both adults and nymphs evaluated here.

- Maximum dispersive distance was reduced in an orchard indicating that more traps would be necessary to reliably capture adults when apple (and probably other hosts plants) are present.

- Influence of other host plants?



Tentative Guidelines for Trapping BMSB in Apple Orchards

- Deploy traps within the border row and at center (especially if border-based management tactics are being used) of plot. BMSB damage will likely be present on nearest neighbor trees.
- Border traps should be deployed along riskiest borders, i.e., wood lots or other specialty and row crops that generate BMSB. Use captures on these traps to guide management decisions.
- Based on trapping radius, traps can be spaced ~40m apart and not compete with each other. One trap should sample from an area of 1.67 ha. We recommend three traps on a risky border spaced ~50 m apart.
- Based on results to date, a cumulative threshold of 4 adults/trap triggers sprays at appropriate intervals. Verifying in 2019.



Greetings from West Virginia