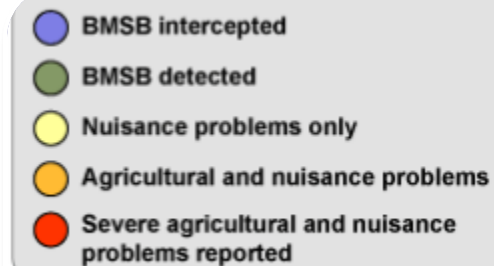


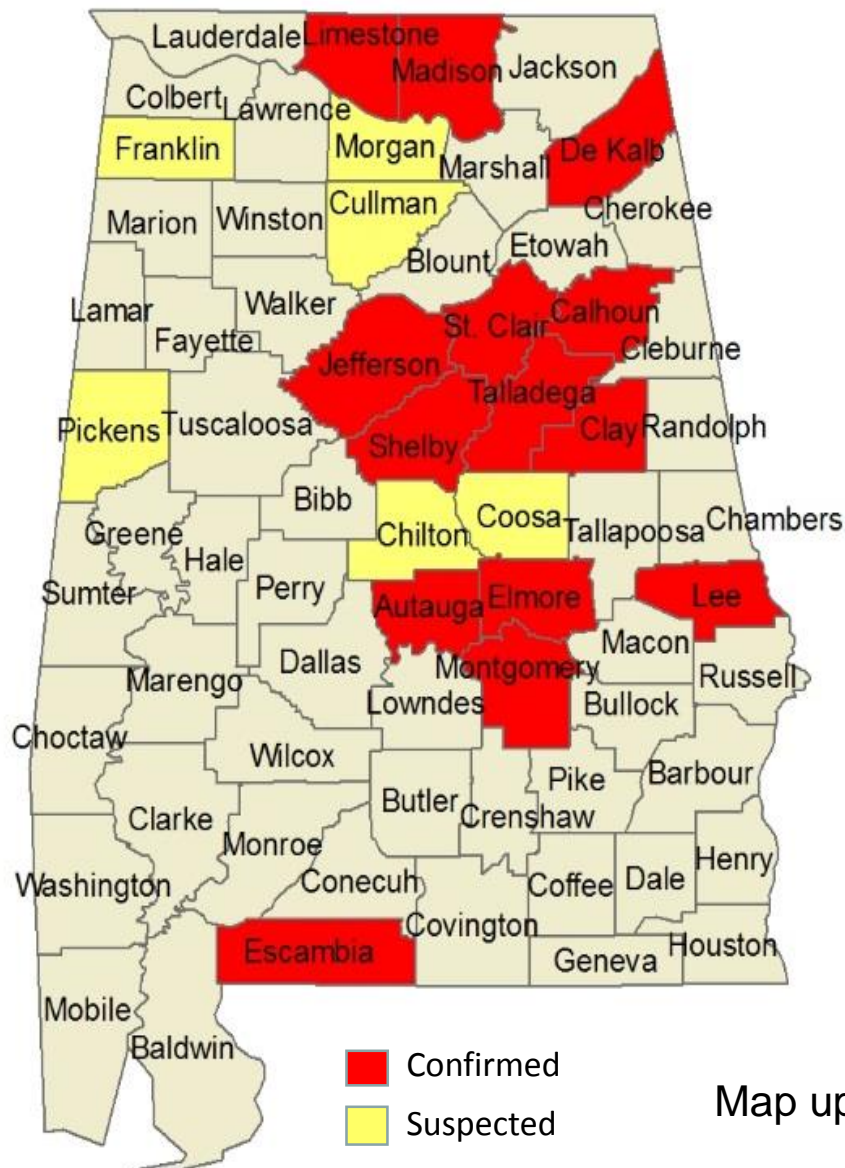
BMSB In Florida: Detected, but not established

- No evidence of a sustained, reproducing population in Florida.
- 36 detections consisting of 69 specimens.
- Additional detections usually associated with travelers returning from states with BMSB – mostly at Florida's agricultural interdiction stations or on RVs.



Figures adapted from www.stopbmsb.org

BMSB in Alabama

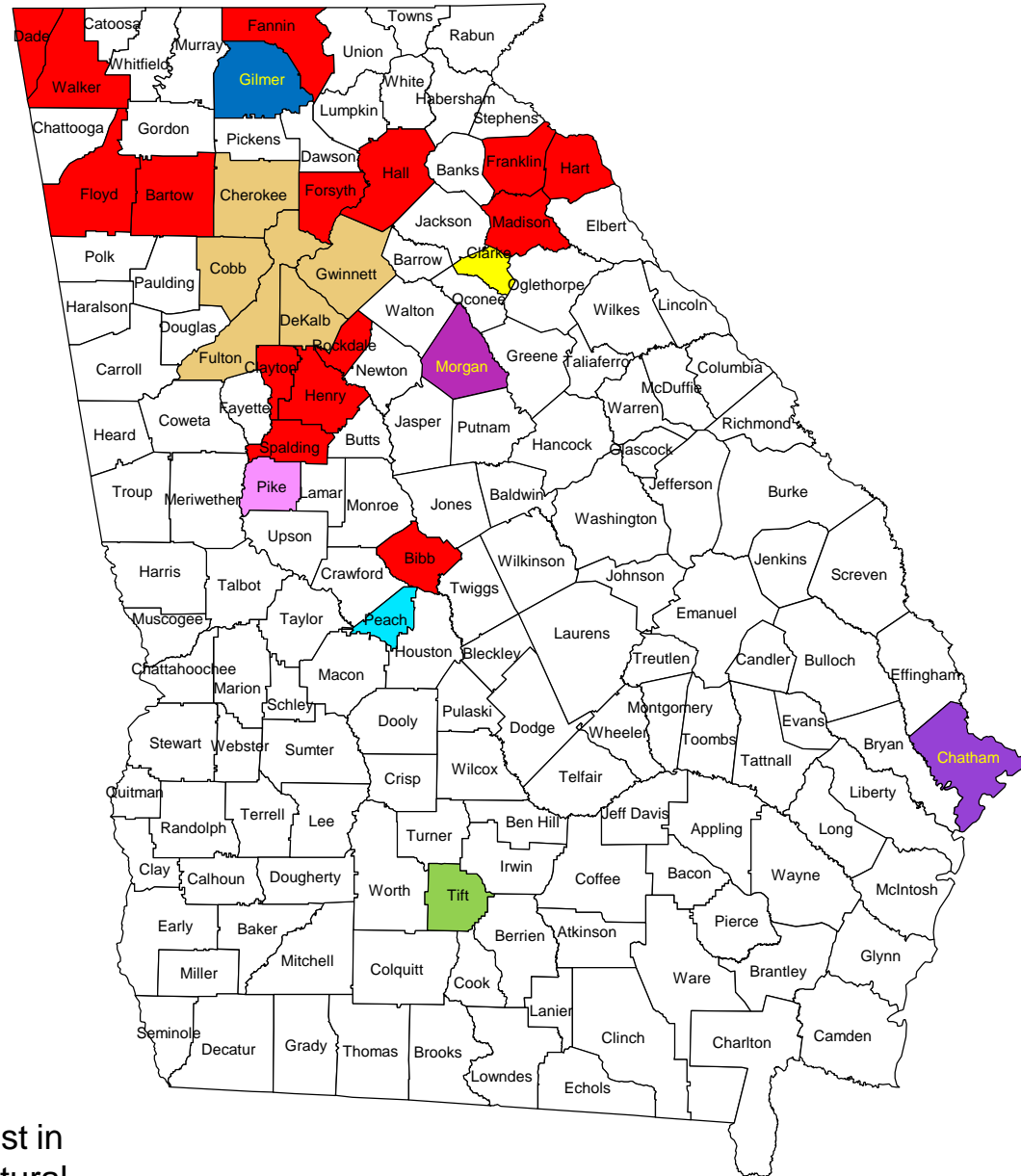


- Nymphal populations on soybean in various locations in north Alabama and Autauga county
- Damaging populations on soybean in Madison county and cotton in Autauga county
- Increase in stink bug damage on corn ears in north AL
- Serious nuisance pest in homes (more reports each year)

Map update: Charles Ray, Auburn University

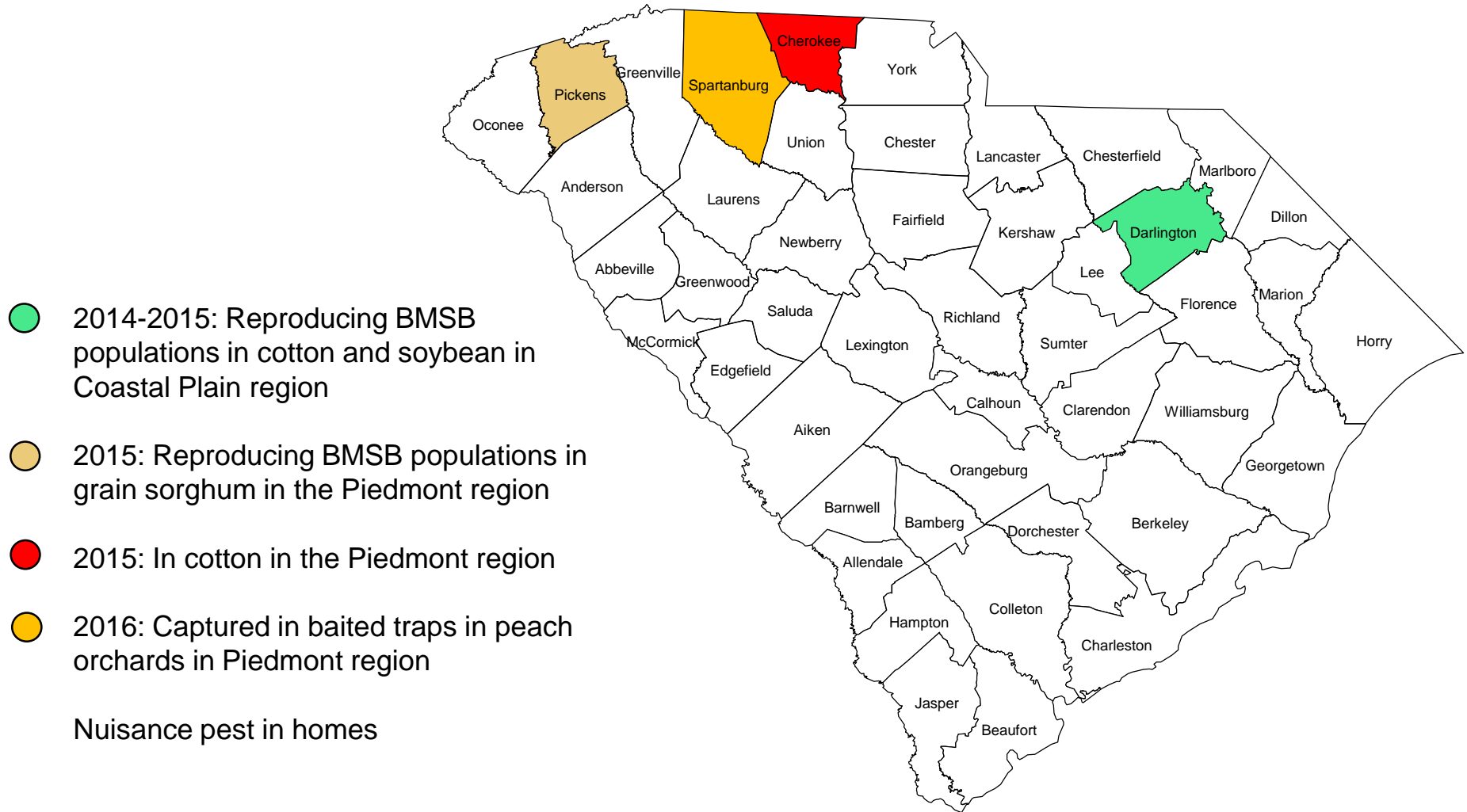
BMSB in Georgia

- 2011-2016: Urban pest management professionals reporting overwintering aggregations in the Atlanta Metro area; established populations; recently egg mass found on apple in Cherokee county
- 2014: reproducing BMSB populations in cotton, pecan, catulpa, and ornamental hibiscus
- 2014: adults in cotton
- Jan. 2015: authorities at the Port of Savannah disclosed detection of BMSB in international cargo shipped out of Ga.
- 2015: BMSB on apples in Gilmer County in the Blue Ridge Mountain region
- 2015: reproducing BMSB populations in soybean in Pike County in the Piedmont region
- 2015: reproducing BMSB populations in peach in Peach County in the Coastal Plain region
- Adults detected
- I-75 Hitchhiker



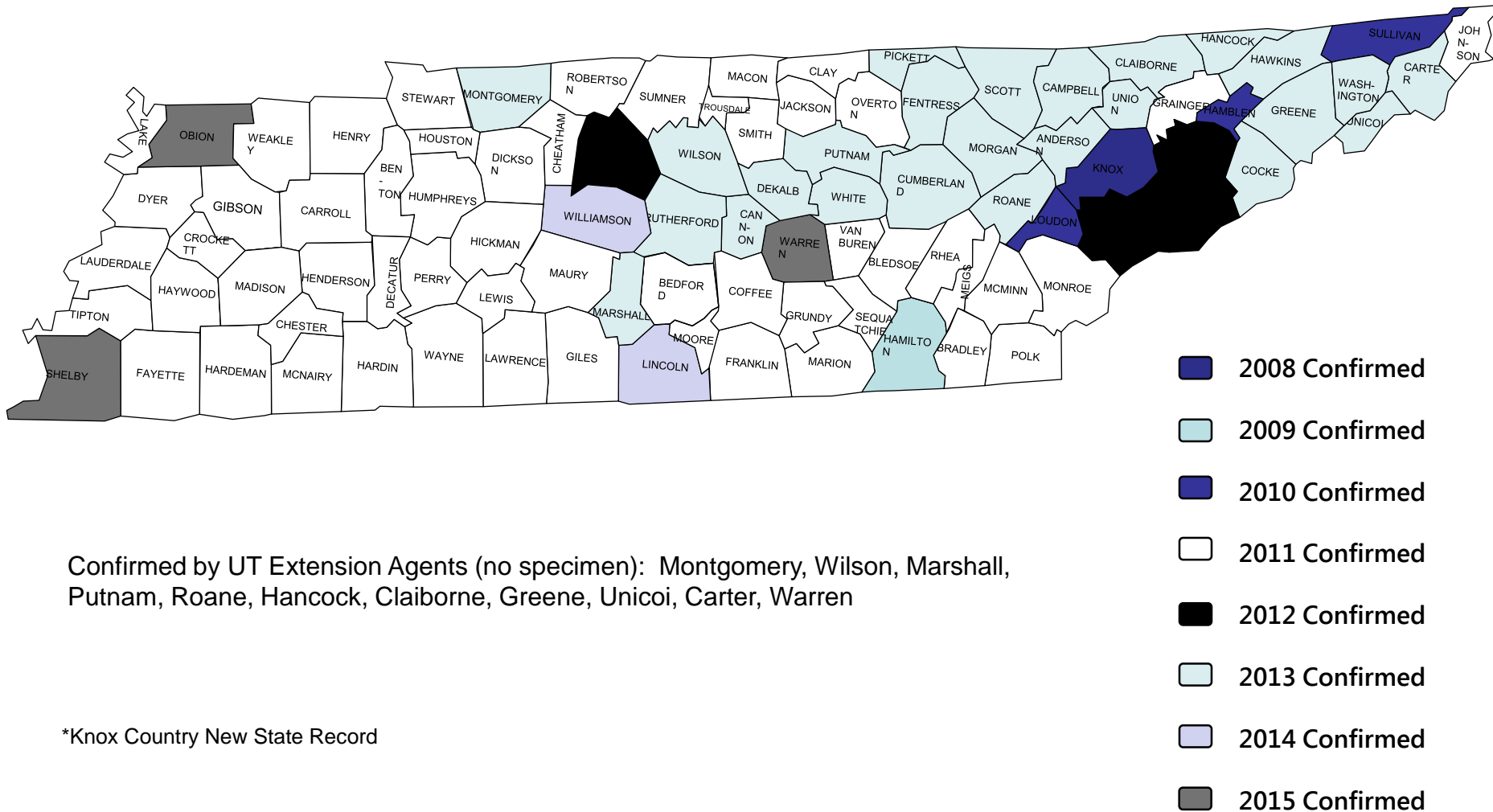
Status: limited establishment, major nuisance pest in homes, reproductive populations in some agricultural crops

BMSB in South Carolina

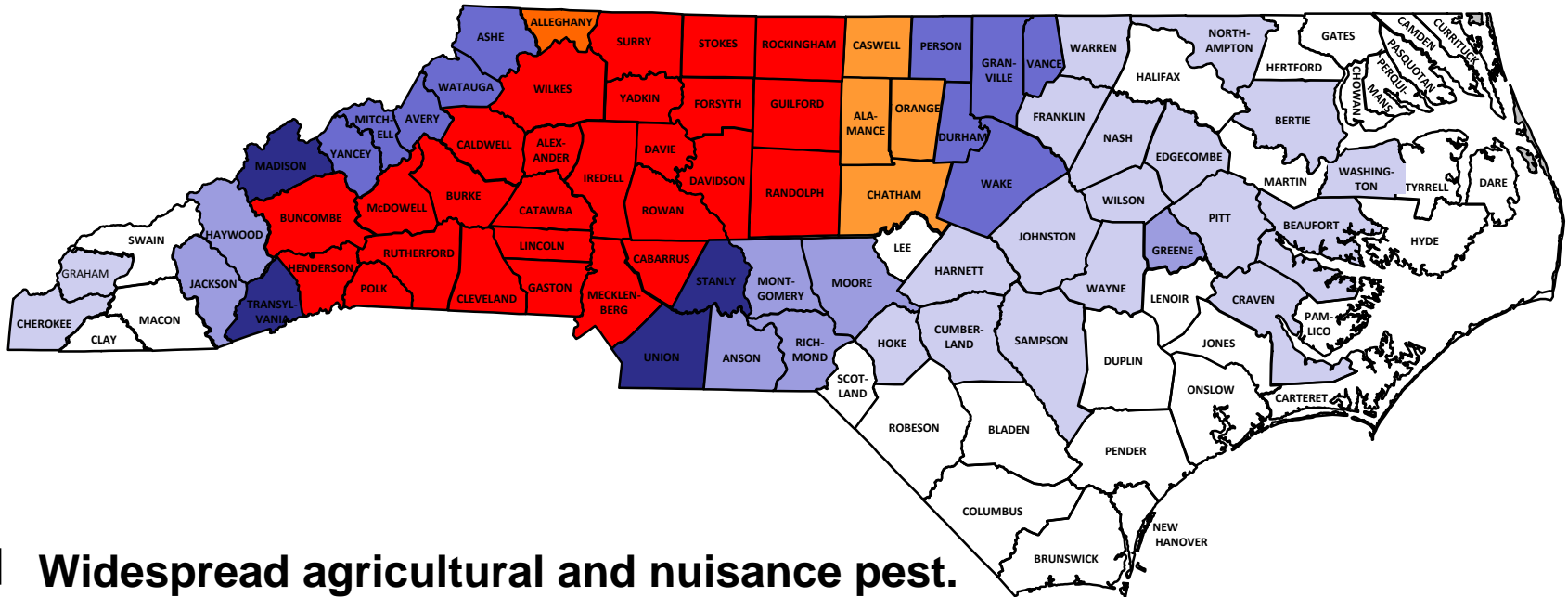


Jeremy Greene, Francis Reay-Jones, Eric Benson, and Stephen Cole – Clemson University

Tennessee BMSB Distribution 2008-2015



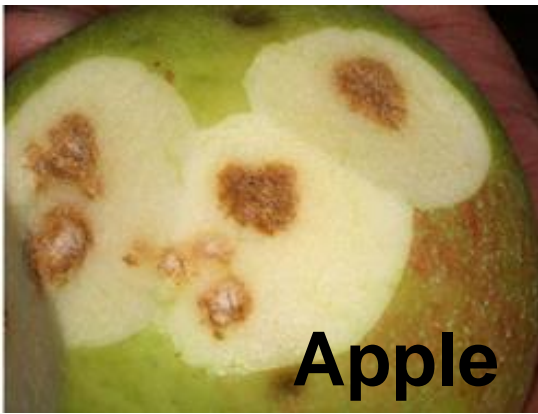
BMSB in North Carolina



- Red** Widespread agricultural and nuisance pest.
- Dark Blue** Locally intense agricultural and nuisance pest.
- Medium Blue** Local hotspots in residential areas.
- Light Blue** Low level populations in isolated areas.
- White** No confirmed detections.

Important Non-Crop Habitats in the Southeast

- Tree of Heaven
 - Catalpa
 - Paulownia
- Black cherry
- Wild grape
- Black walnut
 - Dogwood
 - Locust
- Yellowwood



Apple



Sweet Corn



Peach



Cotton



Pecan

Every nut on tree had this damage



Pepper



Tomato



Soybean

BMSB damage to southeastern crops