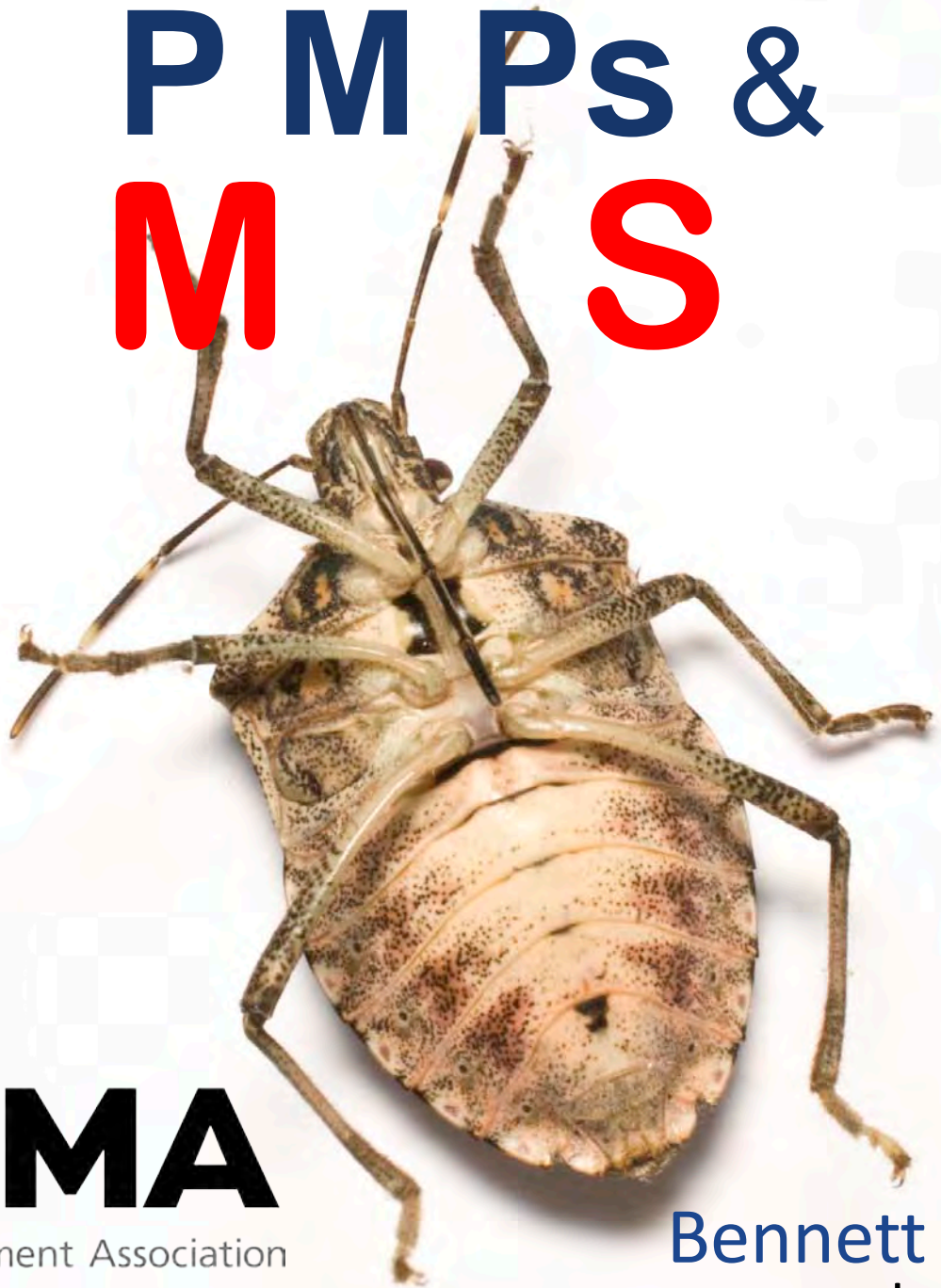


P M Ps &
B M S B



National Pest Management Association

Our Mission is Your Protection

Bennett Jordan, Ph.D.

June 9, 2015

Structural Pest Management

Termites

Rodents

Cockroaches

Ants

Bed bugs

Flies

Stored product pests

...

BMSB

Handbook of Pest Control (Mallis)
2 pages out of >1500 total

**Truman Scientific Guide to Pest
Management Operations**
0 pages out of >600 total



Where we are

Overwintering pest

- Gather on S or W facing, light-colored exterior surfaces in late summer/early fall [**homeowner concern!**]
- Seek dark cracks & crevices for entry
- Attics, structural voids, drop ceilings, trim, fixtures, etc.
- Emerge and leave structure in spring w/photoperiod

**Pest Management
Professional (PMPs) receive
calls in fall and spring***



Where we are: Control

Physical exclusion/habitat mod.

- Sealing C&C around windows, doors, utility access points, siding, fascia, chimneys, switching to yellow or sodium vapor lights, host plant mgmt

- Timing is important



Where we are: Control

Chemical

- Applications to exterior areas prone to BMSB
 - Knockdown but high mortality difficult to achieve
 - Not recommended to treat voids w/o access
- Narrow window for successful application
- Variety of actives & formulations used
 - Often limited residual efficacy (esp. essential oils)
 - Some combo products
 - Some mix in synergist

Where we are: Regulatory challenges

- BMSB not always listed on insecticide labels
- Reduction in available active ingredients
 - Neonicotinoids
 - Upcoming EPA reregistration?



Active Ingredient	Exterior Use*
Acetamiprid	N
β -cyfluthrin	Y
Bifenthrin	Y
Cyfluthrin	Y
Deltamethrin	Y
Dinotefuran	N
Fenpropathrin	N
A-cyhalothrin	Y

© Rutgers 2015
<https://njaes.rutgers.edu/stinkbug/pesticides.asp>

Where we are: Regulatory challenges

- Changes to allowed application patterns
Pyrethroids (3/1/13)

During application, do not allow pesticide to enter or run off into storm drains, drainage ditches, gutters or surface waters.

All outdoor applications, if permitted elsewhere on this label, must be limited to spot or crack-and-crevice treatments only, except for the following permitted uses, if allowed elsewhere on this label:

Applications to the side of a building, up to a maximum height of 3 feet above grade;

Applications to underside of eaves, soffits, doors, or windows permanently protected from rainfall by a covering, overhang, awning, or other structure;

Applications around potential pest entry points into buildings, when limited to a surface band not to exceed one inch in width;

Applications made through the use of a coarse, low pressure spray to only those portions of surfaces that are directly above bare soil, lawn, turf, mulch or other vegetation, as listed on this label, and not over an impervious surface, drainage or other condition that could result in runoff into storm drains, drainage ditches, gutters, or surface waters, in order to control occasional invaders or aggregating pests.

Where we are going: Research

Pest Management Foundation (NPMA) funding BMSB research in 2015-2016

Dr. Matt Frye – NY State IPM Program, Cornell University

1. Evaluate exclusion practices aimed to reduce BMSB in structures
2. Document, demonstrate, and teach how to implement physical exclusion for PMPs and homeowners



Where we are going: Research

Pest Management Foundation (NPMA) funding BMSB research in 2015-2016

Dr. Matt Frye – NY State IPM Program, Cornell University

1. Condominium complex (Hartsdale, NY) w/ reported high BMSB #s recently & near a nursery
2. 2-4 individual units joined in a block (1:1 treatment to control)
3. Research will span 2 fall 'invasions' and 1 spring emergence



Where we are going: Research

Pest Management Foundation (NPMA) funding BMSB research in 2015-2016

Dr. Matt Frye – NY State IPM Program, Cornell University

1. Exterior sealant around windows, doors, utility chases and possibly eaves/soffits (7/15)
2. BMSB populations will be monitored indoors with flying insect traps in attics and living spaces (9/15-4/16)
3. Residents will complete a survey of their experience with BMSB the previous year
4. Treatment units will be inspected in June/July 2016 to document the durability of materials used after one year.
5. BMSB populations will be monitored again from 9/16-11/16 & residents resurveyed
6. Results available in PM trade pubs, NYSIPM website, SCOPE (Sci. Coalition on Pest Excl.)

SUMMARY

BMSB=Overwintering pest

Control:

- 1. Physical exclusion & habitat modification**
- 2. Chemical**

Challenges:

- 1. Time**
- 2. Control strategy implementation**
- 3. Insecticide labels & use patterns allowed**
- 4. Selling control w/o BMSB present**

Questions?

