

Brown Marmorated Stink Bug in California 2015

Charlie Pickett (CDFA)

Ricky Lara-Artiga and Mark Hoddle, UC Riverside
Chuck Ingels, UC Cooperative Extension, Sacramento

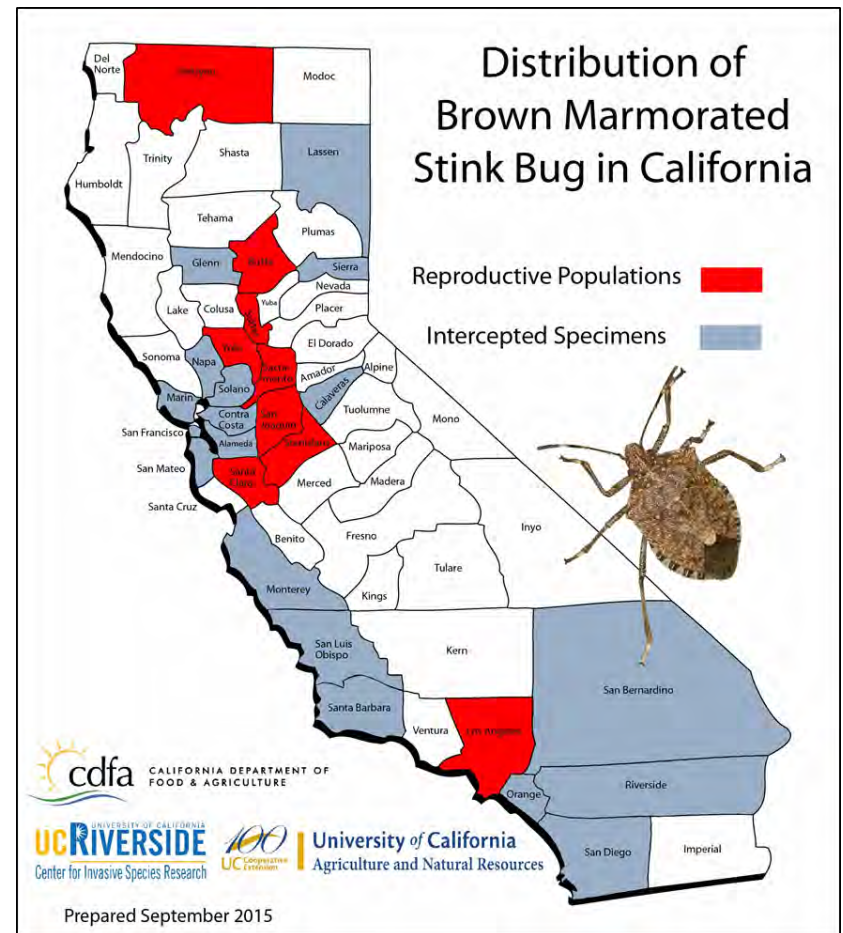
Winchester, Virginia
BMSB National Working Group Meeting

Overview, California 2015

- Survey for BMSB
 - Spread in state
 - Hosts plants
- Biological Control
 - Sentinel Egg Survey
 - Host specificity testing (Hoddle & Lara-Artiga)

Distribution of BMSB in California

- 2002 first report of BMSB in CA
- 2006 first reproducing population, LA County
- 2013, second county with BMSB pop.
- 2015, 9 counties



Sacramento, CA 2015,
Olive



Feeding on Olives In Lab



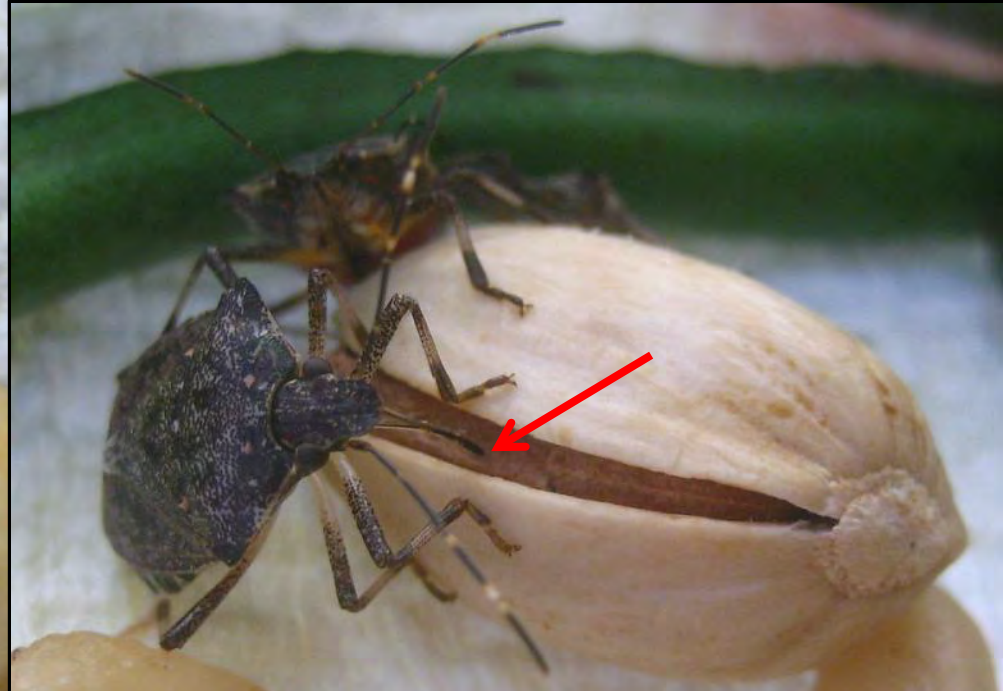
Avocados



Citrus

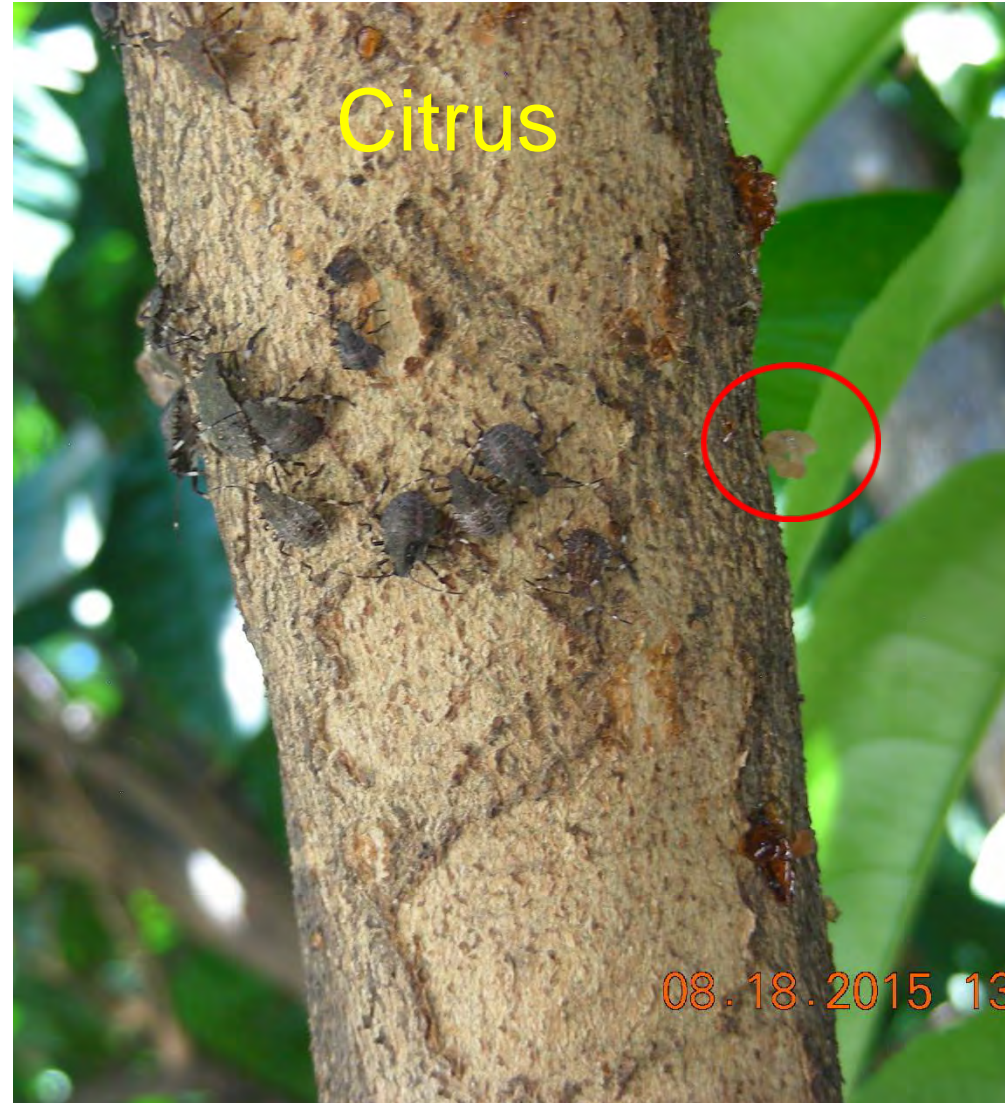


BMSB feeding on raw pistachios harvested in Kern County under laboratory conditions



Feeding Through Bark

Sacramento, CA 2015





Trees associated with BMSB in California

Surveys

- Sacramento
- Chico
- San Jose

Most common hosts

- Tree of heaven
- Chinese pistache
- Elm (*Ulmus davidiana*)
- Maple (*Acer buergerianum*)
- Catalpa sp.
- Crepe-myrtle

Biological Control of BMSB

- Resident Natural Enemies?
 - Parasitoids
 - Predators

Results from Sentinel Eggs

- Predation
 - 11% of eggs removed (263 masses deployed)
 - Carabid, *Laemostunus complanatus*
 - Earwig, *Euborellia annulipes*
 - *Astata spp.*, predacious wasp
- Resident parasitoids
 - Less than 3% of masses attacked (n=546)
 - *Trissolcus* & *Telonomus*

Rat eating BMSB eggs on sentinel card

Sacramento, October 2015
Imaging by M. Stadtherr (CDFA)



Acknowledgements

- Funding
 - Specialty Crops Block Grant Program
 - Federal Farm Bill
- Cooperators:
 - Marypat Stadther, Viola Popescu, CDFA

Acknowledgements:

We thank Marypat Stadtherr for technical support and Sean Farnum for production of the state map. The following individuals helped with monitoring traps: Jodi Aceves (Siskiyou Co.), Bob Aguilar (Merced Co.), Erik Baxter (San Joaquin Co.), James Bethke (UCCE San Diego), Gurreet Brar (UCCE Fresno), David Doll (UCCE Merced), Ben Faber (UCCE Ventura), Graig Graffin (Napa Co.), Dennis Haines (Tulare Co.), Gene Hannon (Fresno Co.), David Haviland (UC Cooperative Extension, Kern), Jim Henrich (LA Arboretum), Greg Hinton (Glenn Co.), Brent Holtz (UCCE San Joaquin), John Kabashima (UCCE Orange), Humesh Kumar (CDFA), Adam Lambert (UCSB), Cheryl Lauritsen (Lassen Co.), Michelle Lawson (Yolo Co.), Dani Lightle (UC Cooperative Extension, Glenn), Tamara Majcherek (UCCE Orange), Frank McDonough (LA Arboretum), Christopher Martinez (UCCE Orange), Maxwell Norton (UCCE Merced), Nick Oliver (Sutter Co.), Eric Richardson (Marin Co.), Stephanie Rill (UCCE Kern), Win Rogers (UCCE San Joaquin), Matt Slattengren (Contra Costa Co.), Emily Symmes (UC Cooperative Extension, Tehama), Tim Thibault (The Huntington), Jerry Turney (LA Co.), Bryan Vander May (UCCE San Diego), Lynn Wunderlich (UC Cooperative Extension, Placer), Eric Wylde (Santa Clara Co)